

# Robbins Farm History Project





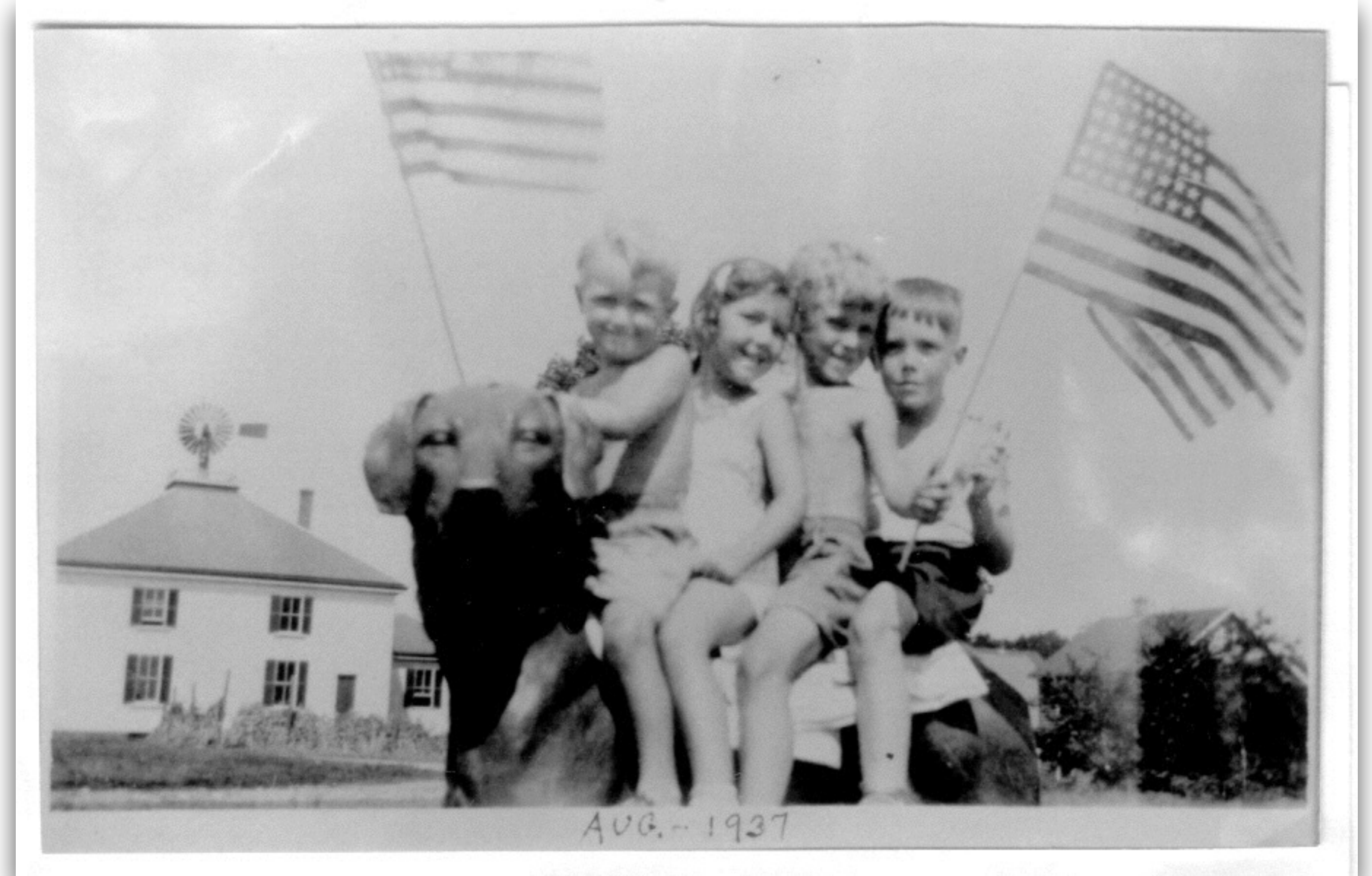
# Robbins Farm History Project

## History and Background





# History and Background

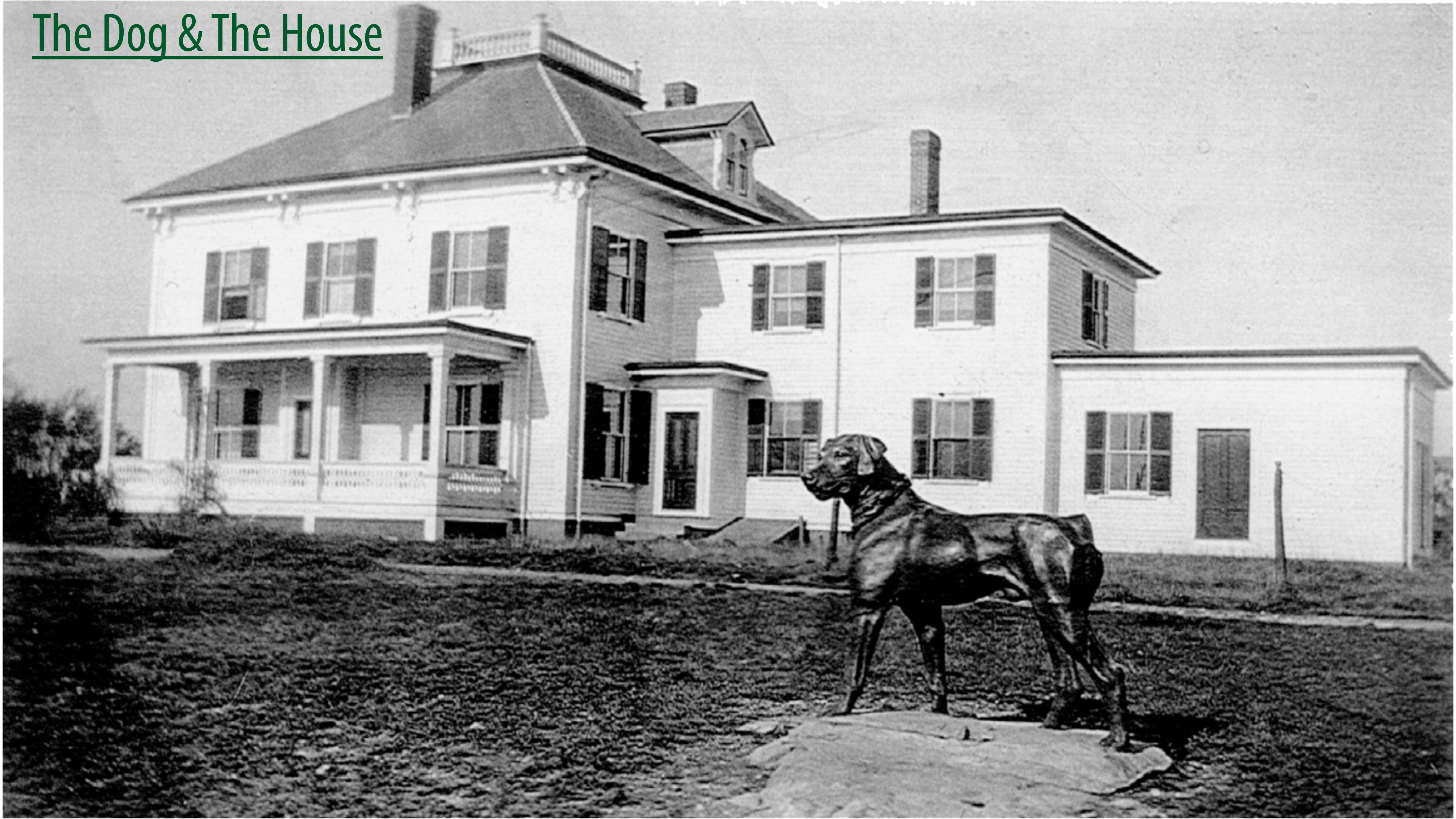


4th of July, 1937

Stephen Stiles, 1933



# The Dog & The House

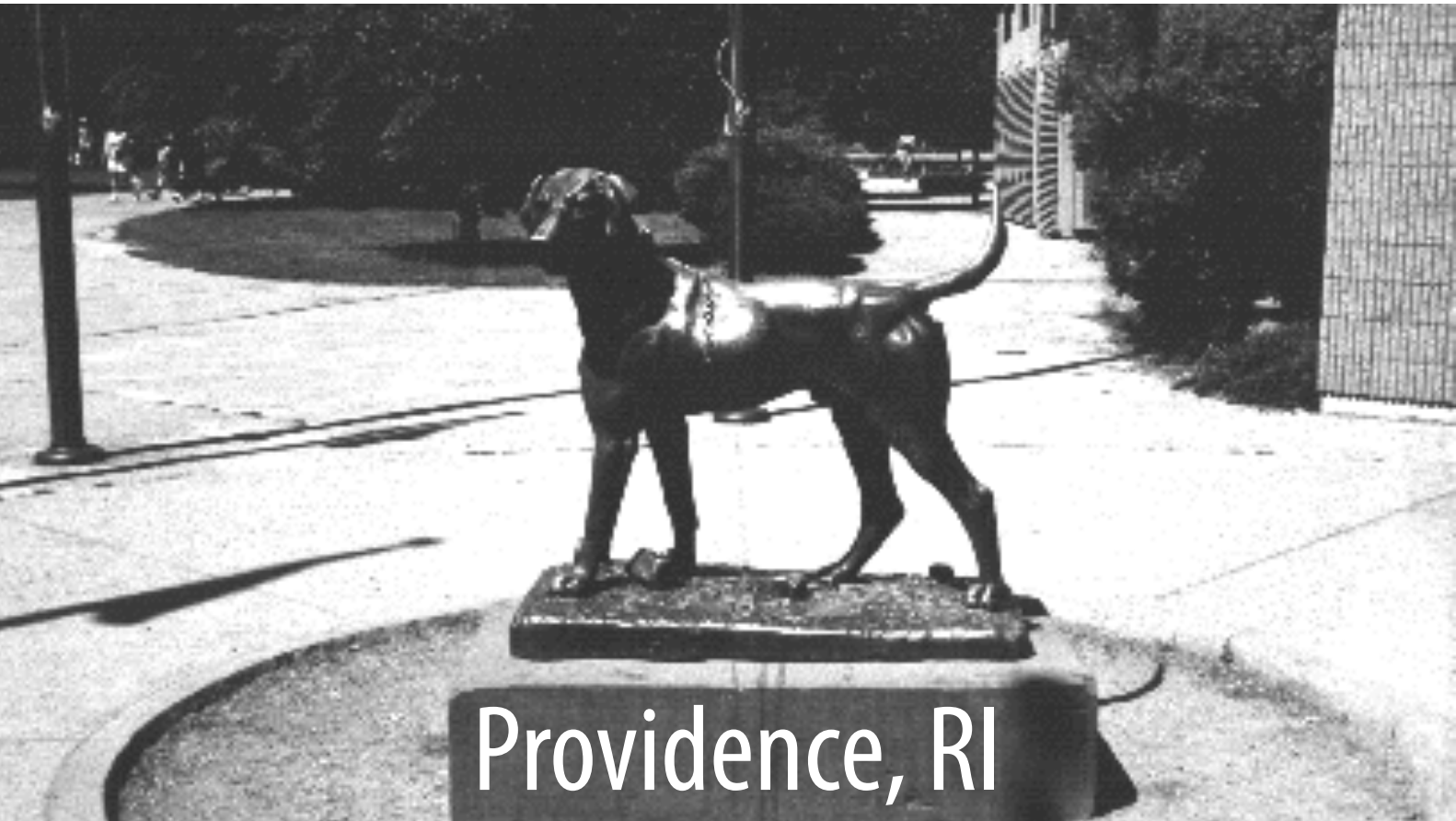








# Research: Dog Sculpture Provenance



Providence, RI



Mineral Point, WI



Santa Barbara, CA



## The Sentinel, (sculpture).

Artist: [Hoppin, Thomas Frederick, sculptor.](#)  
[Gorham Manufacturing Company, founder.](#)

Title: The Sentinel, (sculpture).

Dates: 1851. Relocated 1896.

Digital Reference:

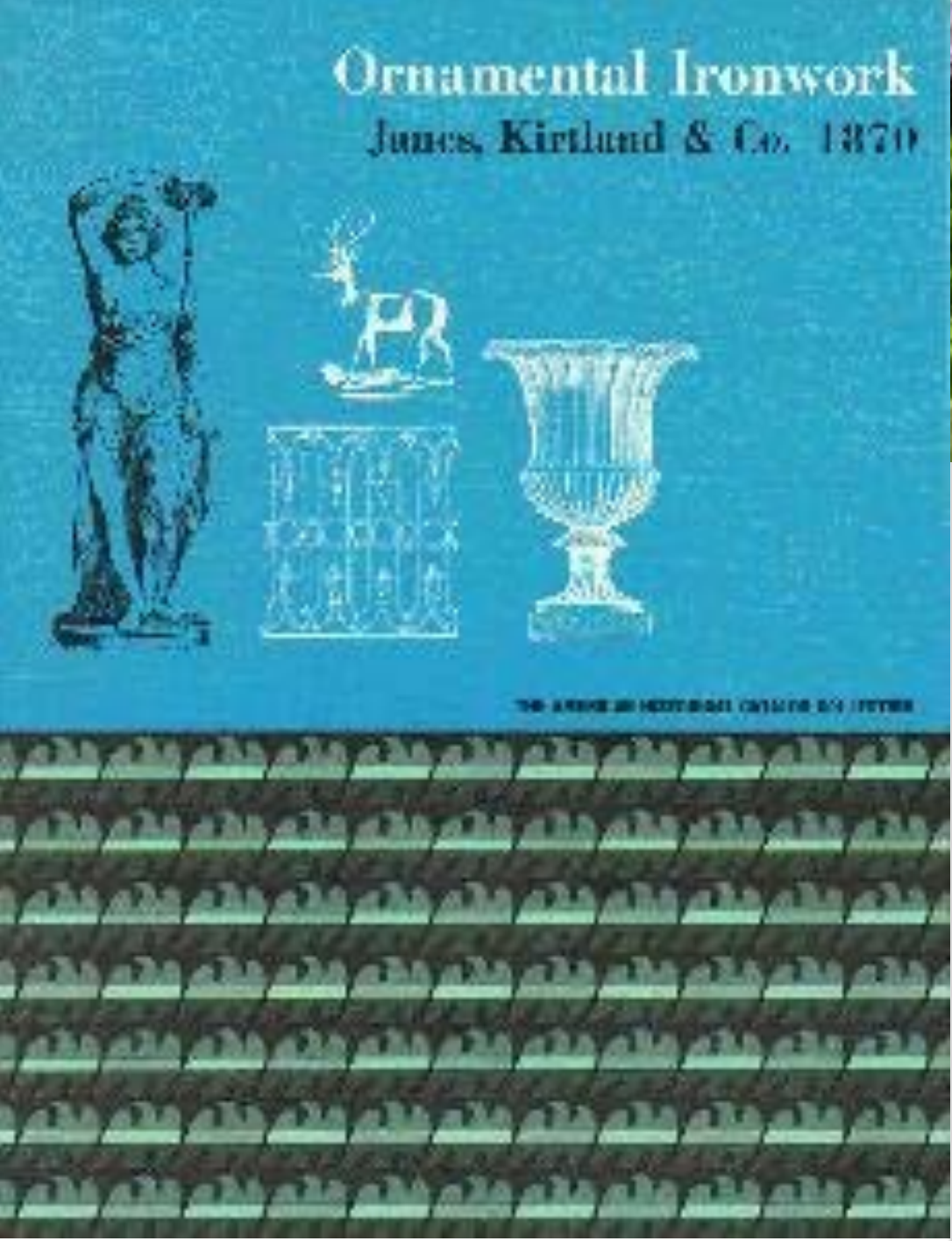


Medium: Sculpture: bronze; Base: concrete.

Dimensions: Sculpture: approx. 48 in. x 28 in. x 4 ft. 6 in.; Base: approx. 14 in. x 37 in. x 5 ft. 4 in.

Inscription: (On bronze base:) T.F. Hoppin (On collar:) T.F.H. signed

Description: Standing Mastiff with thick studded collar and a chain draped over his back.





# Dog Sculpture Casting Call: *The Pillot Dogs, Houston, TX*

Houston Parks and Recreation Department  
Pillot Dogs



**Title:** Pillot Dogs  
**Artist:** Del Rey Bronze Inc.  
**Date:** 1870's  
**Type:** Sculpture  
**Medium:** Cast Iron  
**Location:** Sam Houston Park



This pair of dog sculptures is widely regarded as Houston treasures. They stand guard over the steps leading to the Pillot House in [Sam Houston Park](#).

Eugene Pillot ordered them from the Janes, Kirtland, and Company catalog in the 1870's. Made of cast iron, they were made in Morrisania, New York, from a design by an artist listed as Richardson. Mr. Pillot had them installed at the entrance to his house, which became a local landmark, partly due to the house's architectural charm and partly because of the dog sculptures.

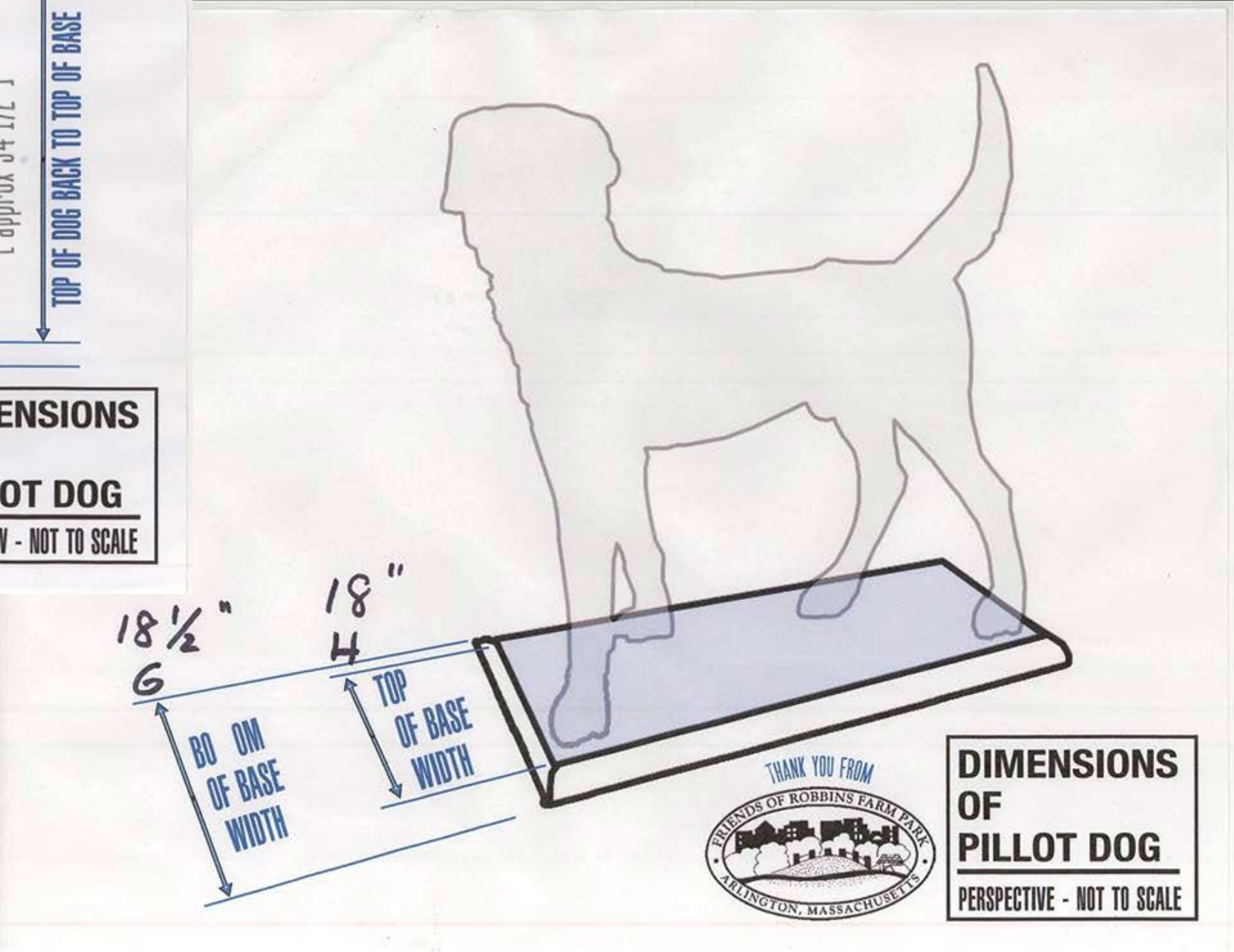
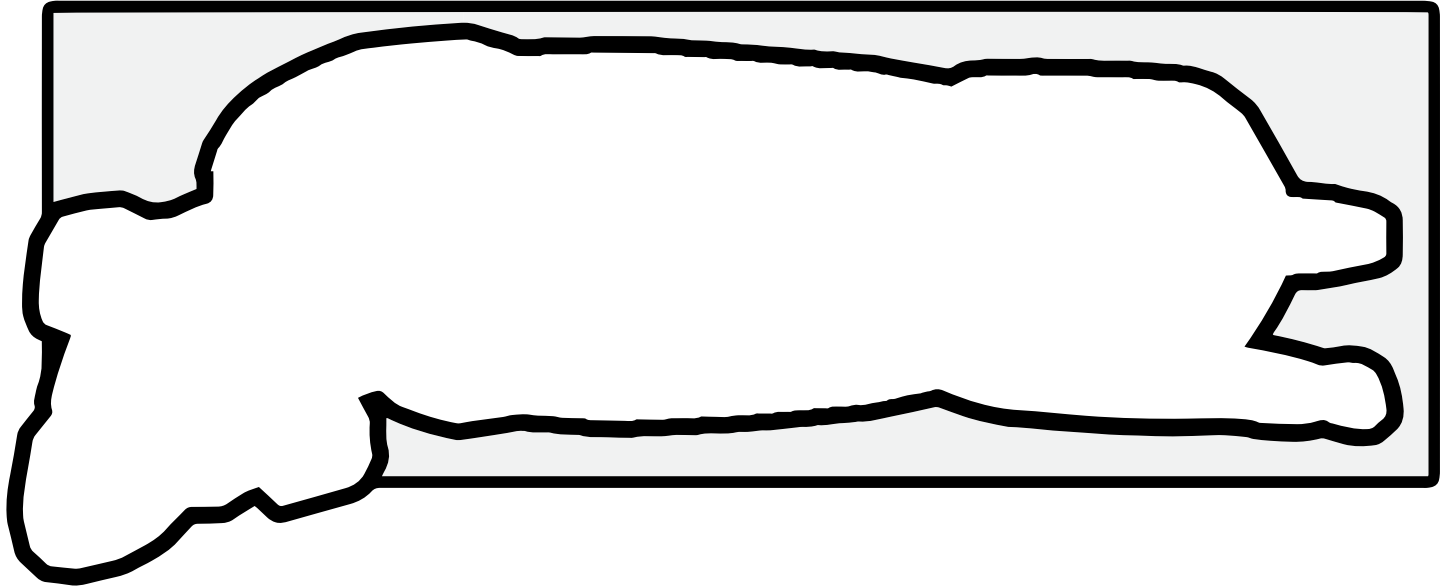
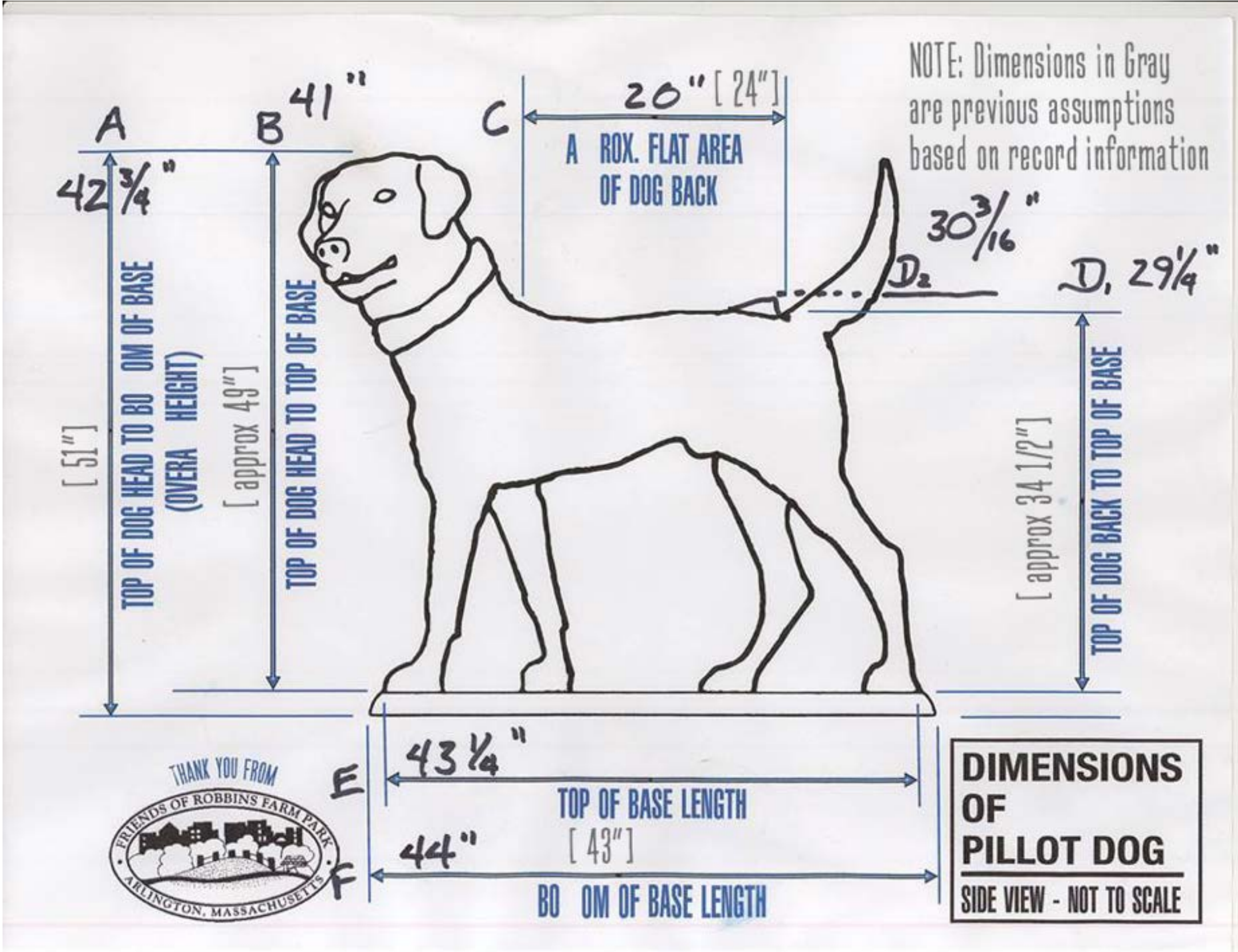
Later, they were donated to the [River Oaks Garden Club](#), then given by the club to the [Heritage Society](#) to be reunited with the Pillot House when it was moved to Sam Houston Park. Unfortunately, the sculptures were cracked and chipped and it was determined that they required restoration. The originals now reside in the Heritage Society Museum. Replicas were cast by Del Rey Bronze of Houston, and they stand guard over the Pillot House.

Art In Parks is Funded by a grant from the City of Houston through Houston Arts Alliance





# The Sculpture - Size





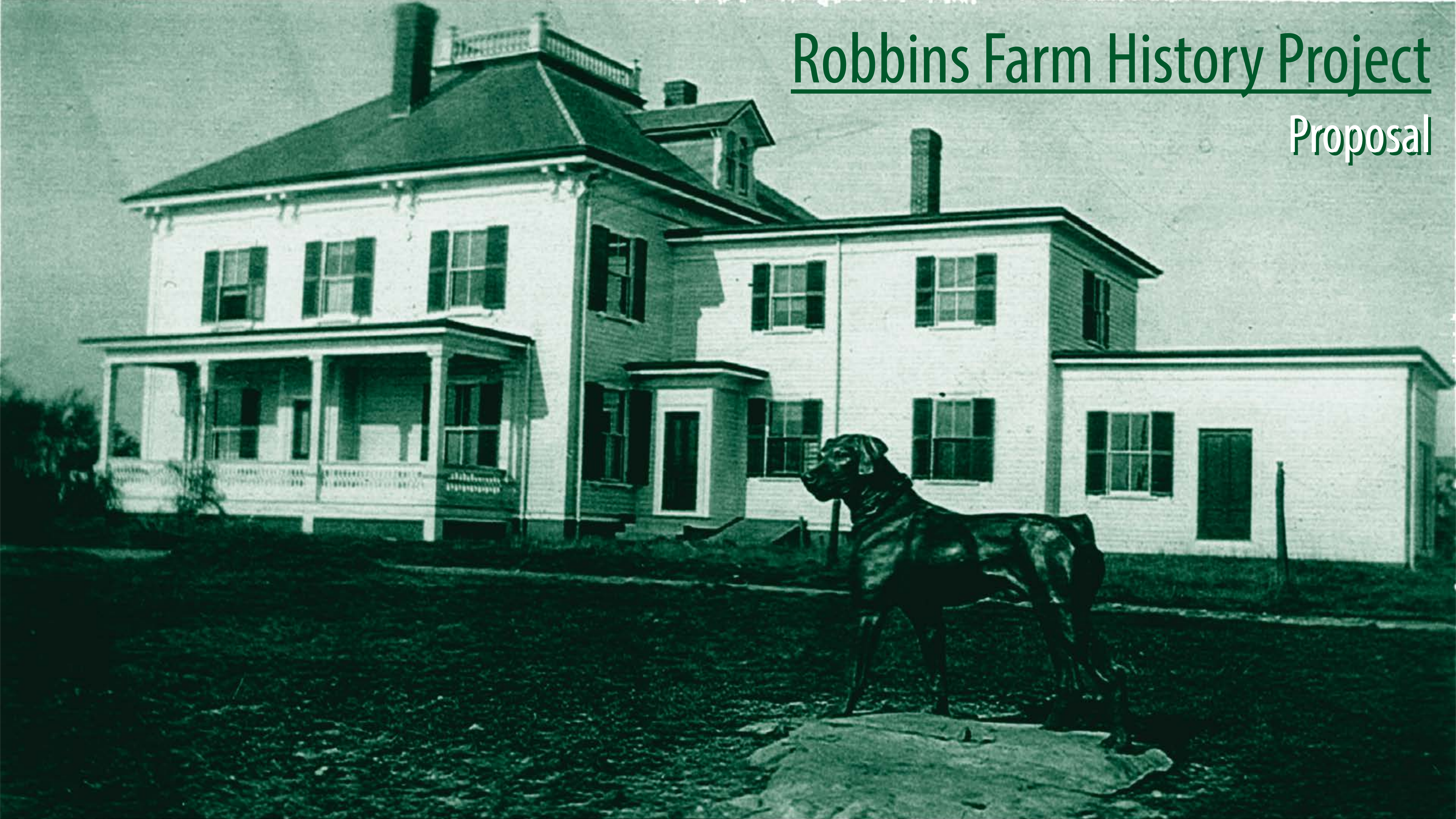
# The Sculptor and Foundry



Artist Lori Betz, Houston, TX

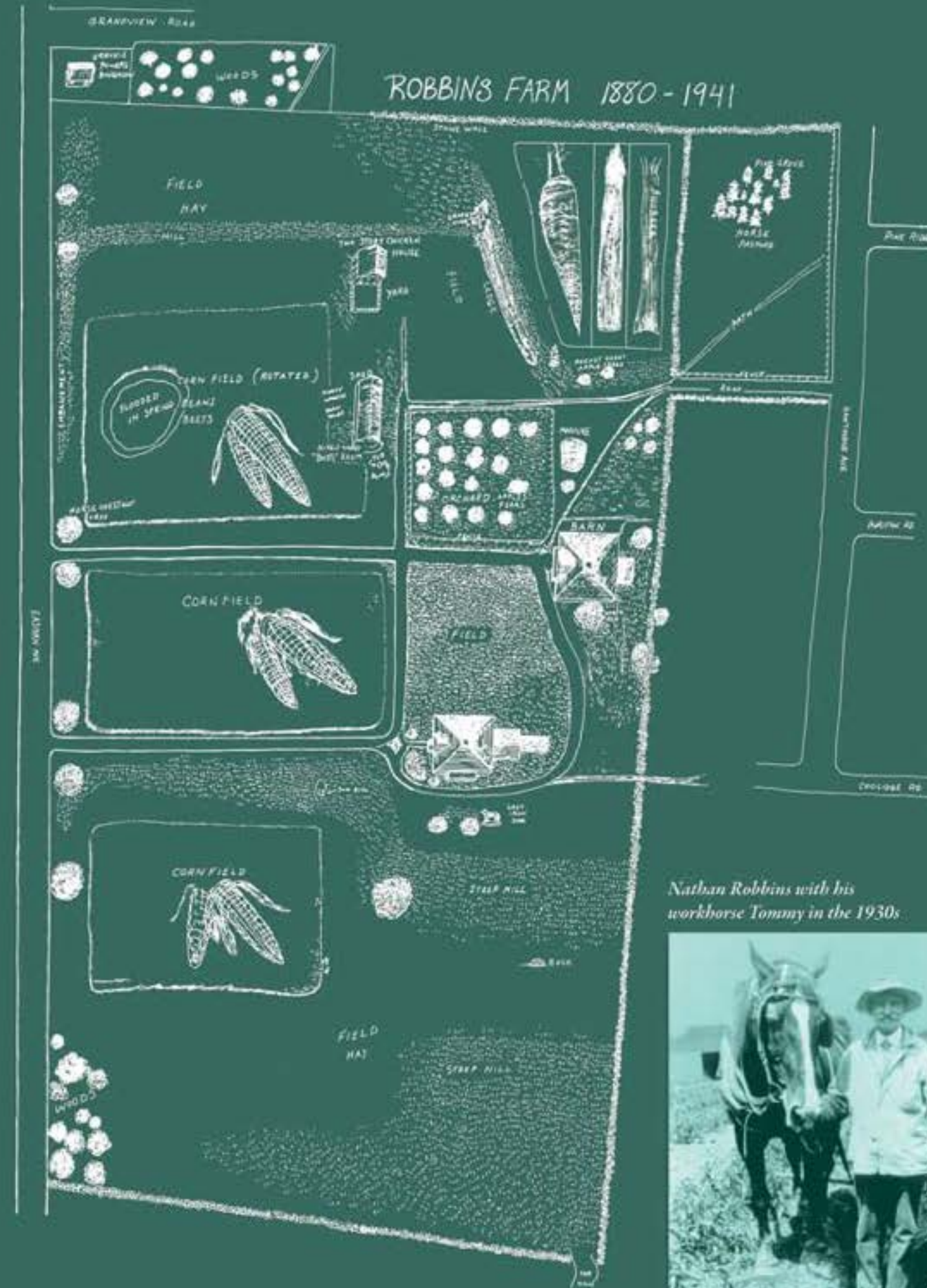


# Robbins Farm History Project Proposal





# History of Robbins Farm



Illustrated map drawn by Geoffrey Stiles from old maps and descriptions by his father Stephen Stiles, 1990

ROBBINS MANSION AT CREST OF HILL



Helen, the cow, grazed on the lawn in front of the mansion. 1930. Photo by Joseph Morton

The Robbins Family acquired this land in 1734. British soldiers tried to set their farmhouse on fire on April 19, 1775. Nathan Robbins, Jr., built the mansion pictured above in 1880. His grandson, Nathan, farmed here from 1910 to 1940. It was said he grew the sweetest corn around. Farmer Robbins, who looked the other way when children picked apples, wanted the farm to become a playground. With his backing and the advocacy of the Heights Tower Association, the town acquired the land for a park in 1941. The mansion was torn down in 1947.

Robbins Farm Park: A Local History is available at Robbins Library.

Nathan Robbins with his workhorse Tommy in the 1930s



Skating by the barn circa 1960. The barn (then the Rec Center) was torn down in 1962 and replaced by tennis courts -- removed in 2003.

Gift of  
The Friends of Robbins Farm Park, 2006



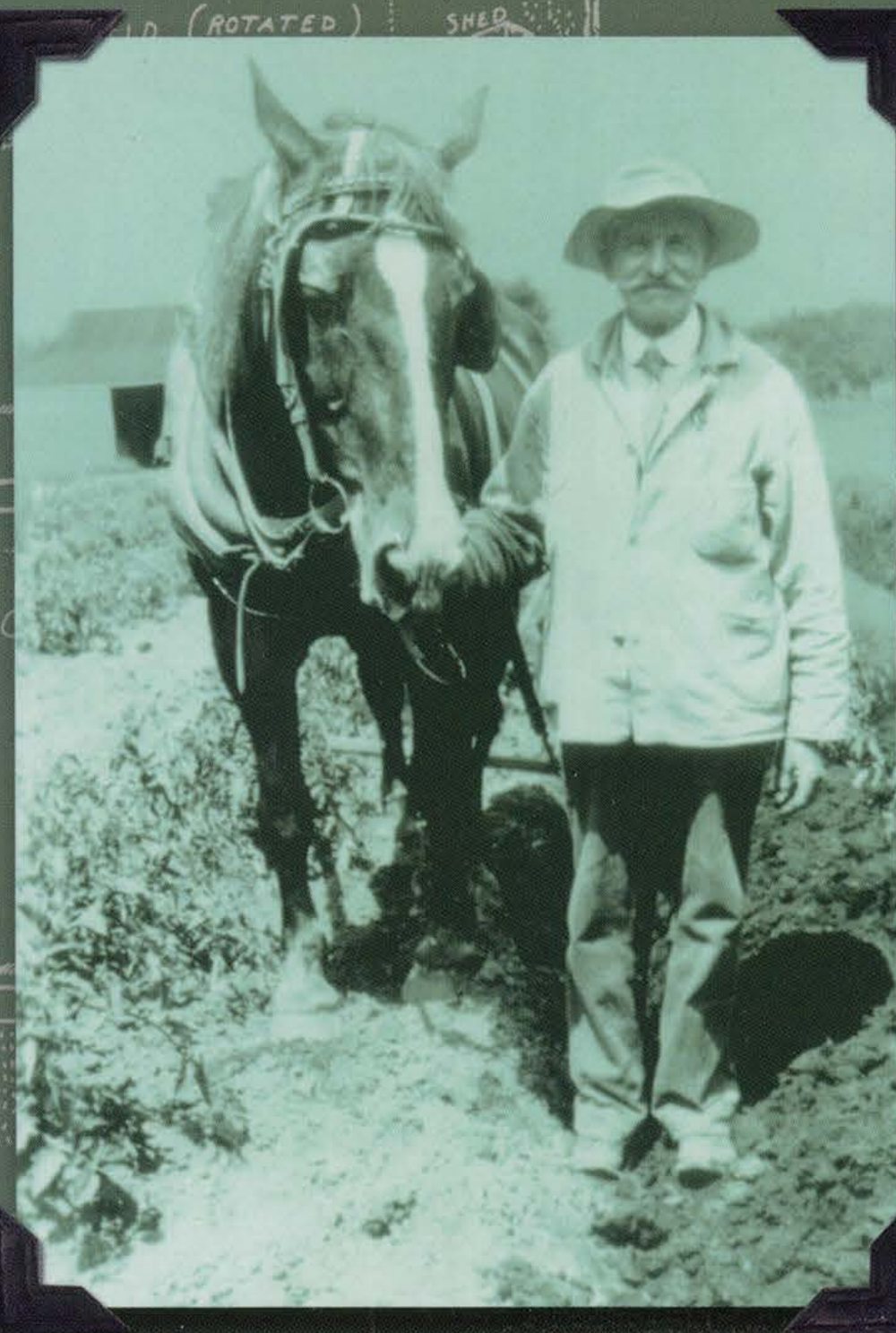


# Robbins Farm Park

Arlington, Massachusetts

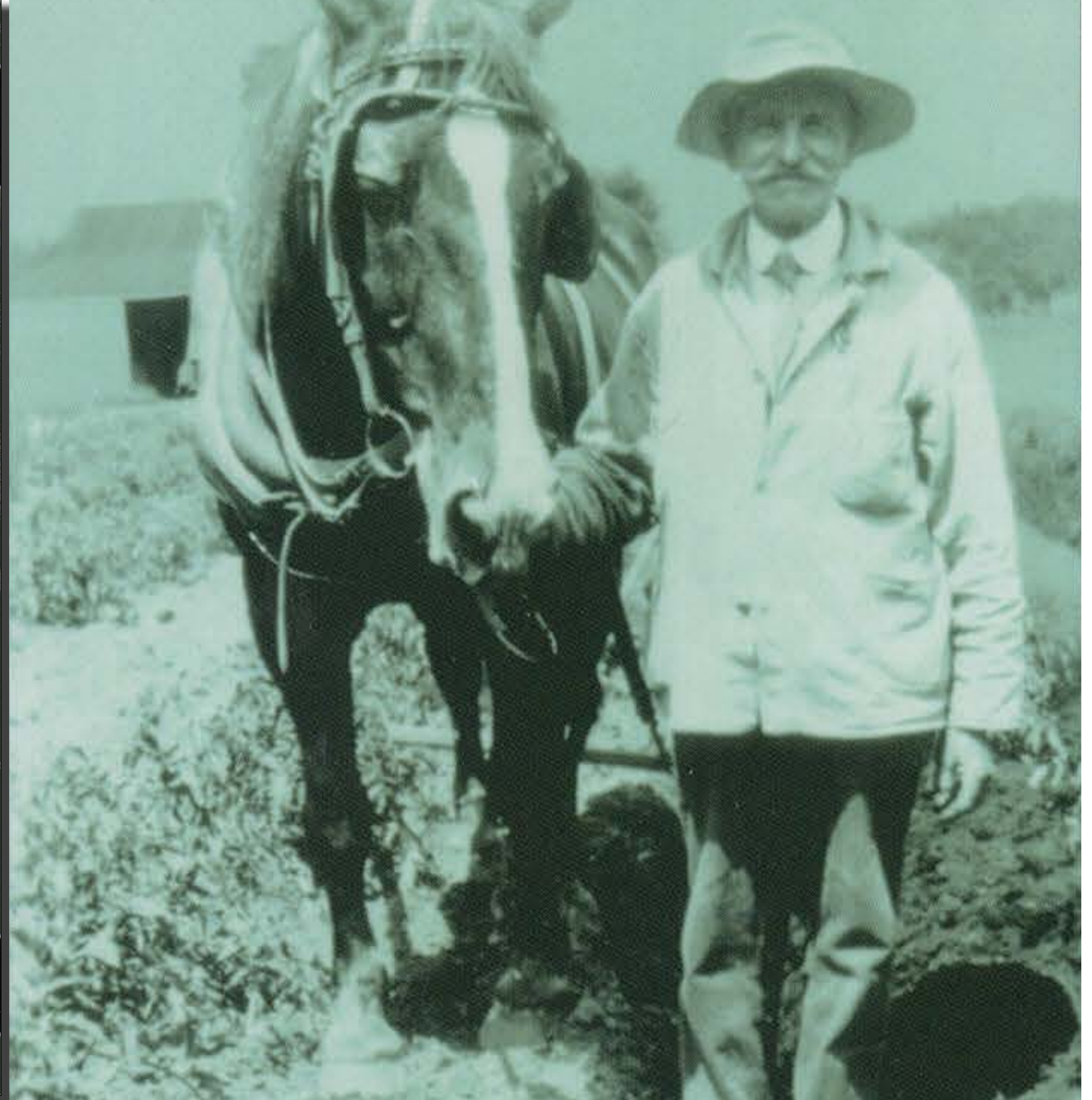
## A Local History

From the Revolutionary War to the Present



3rd Edition with Addendums

# Oakes Plimpton





# Robbins Legacy

*What Might Have Been . . .*

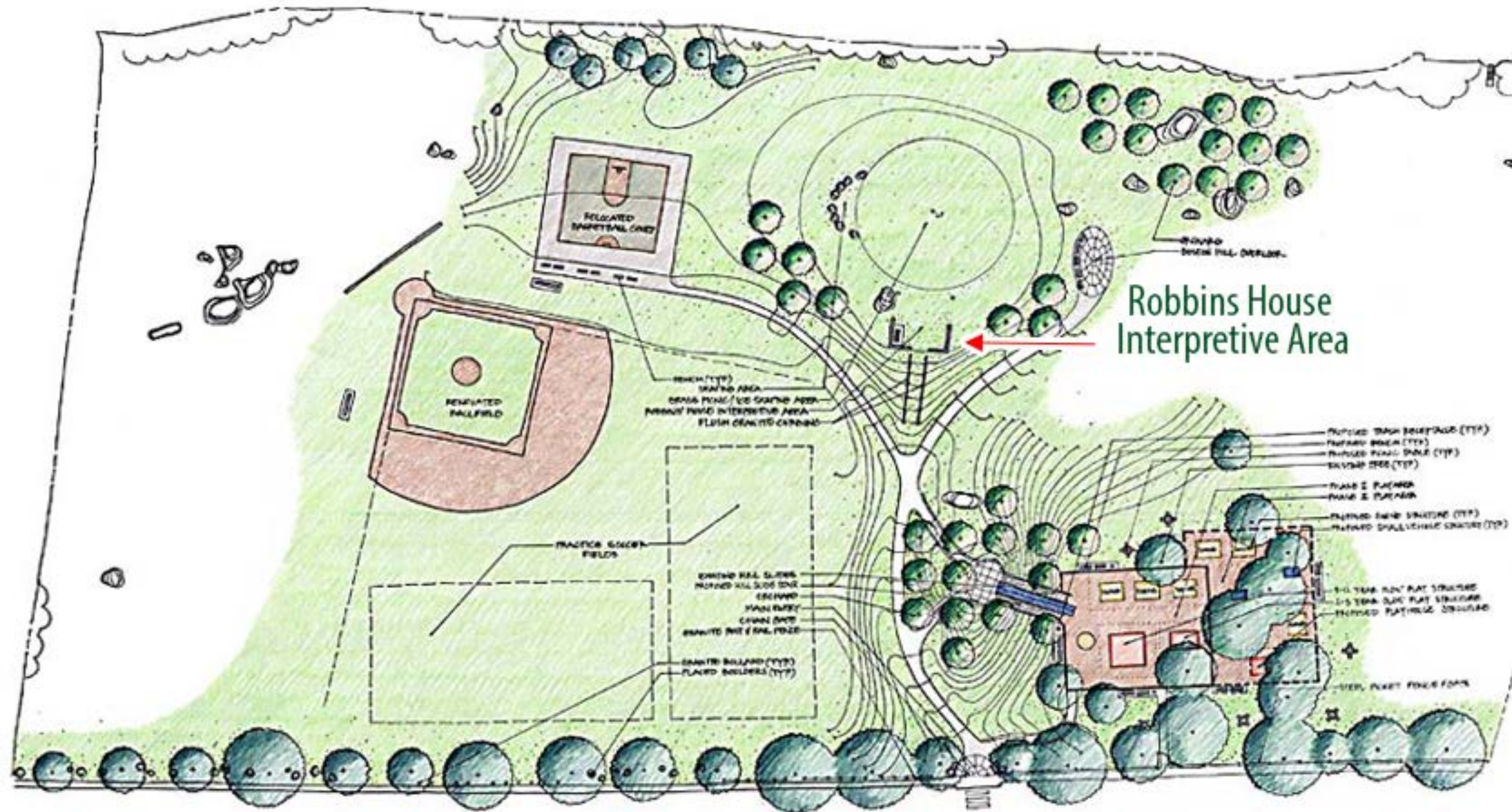


*Our Good Fortune . . .*



Photo Illustrations by Tony Vogel





Robbins Farm Park Master Plan • Carol R Johnson Associates • 2002





This is a detailed site plan for the Robbins House Interpretive Area. The plan shows a network of paths, including a main path and several loops. Various landscape features are marked, such as trees, a pond, and a building. A red arrow points to a specific location on the main path. The plan is annotated with numerous labels for different areas and features.

## Robbins House Interpretive Area

GENERAL (TYP)  
TRAINING AREA  
GENERAL POND / ICE STORAGE AREA  
GENERAL POND INTERPRETIVE AREA  
FLUSH CRACKED CARBONS

GENERAL  
GENERAL POND OVERFLOW

PROPOSED TRAIL SURFACING (TYP)  
PROPOSED POND SURFACING (TYP)  
PROPOSED POND SURFACING (TYP)  
PROPOSED POND SURFACING (TYP)

TRAIL 2 PLANTING  
TRAIL 3 PLANTING

PROPOSED BIRD SHELTER (TYP)  
PROPOSED SMALL VEHICLE SHELTER



# The Site











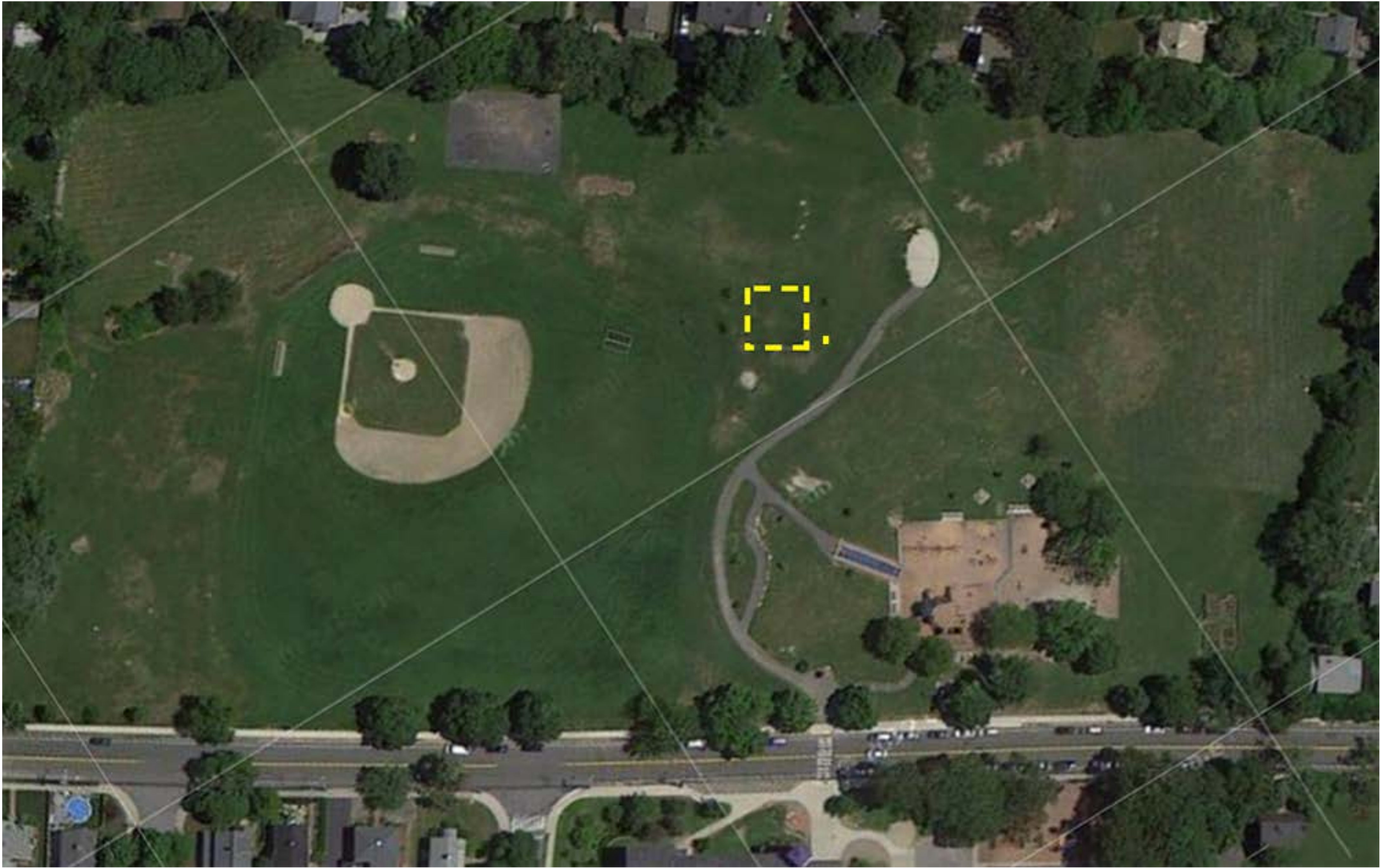
ROBBINS FARM 1880-1941

BRACKETT SCHOOL





















# Robbins Farm

## History Project



Robbins History Project

Robbins Farm Park



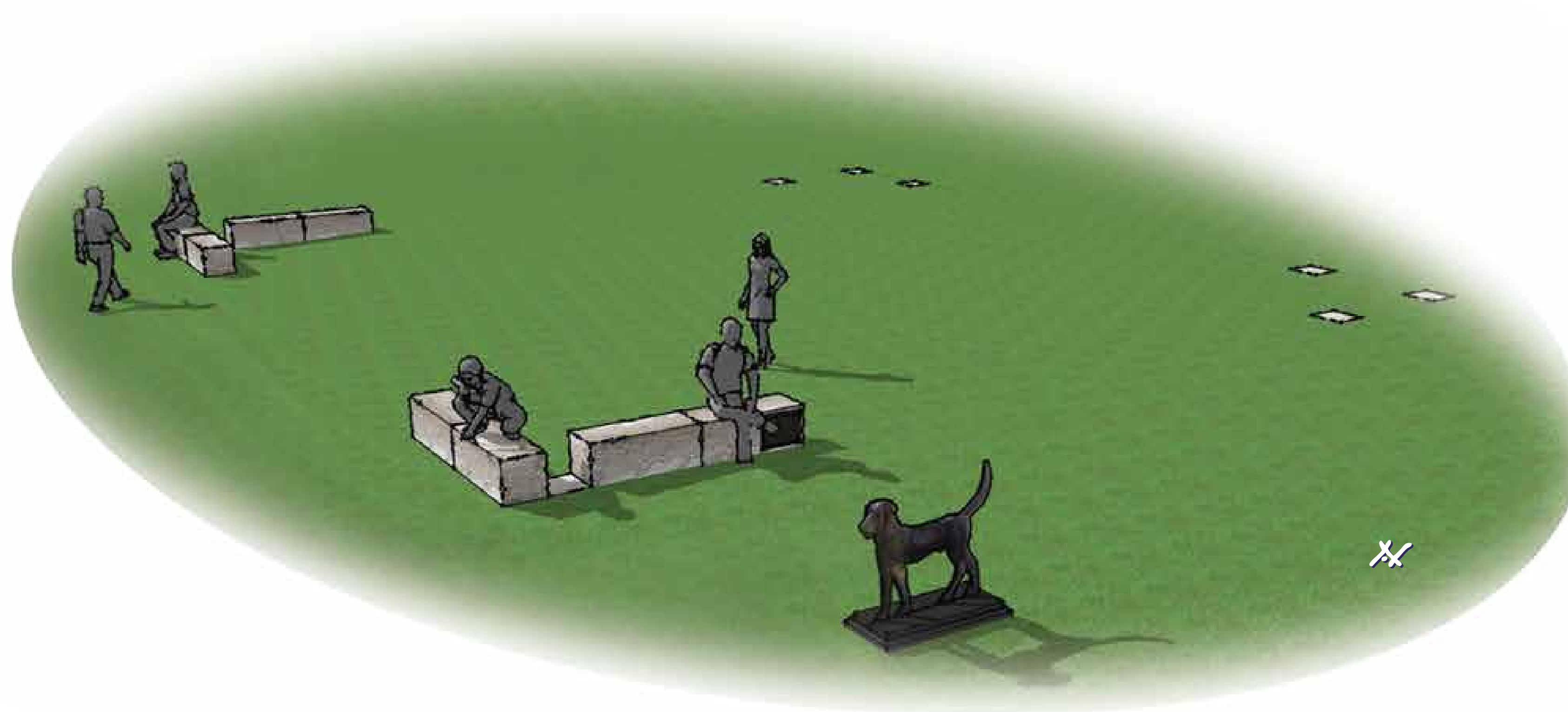
*Robbins Mansion & Dog, 1936*

*Old Farmer Robbins' iron dog was here.  
To town children he was beloved and dear.  
The dog stood guard outside his mansion white.  
Returned, he guards the stones that mark its site.*

## Design Drawings

Sept 2014





Robbins History Project  
Robbins Farm Park



1

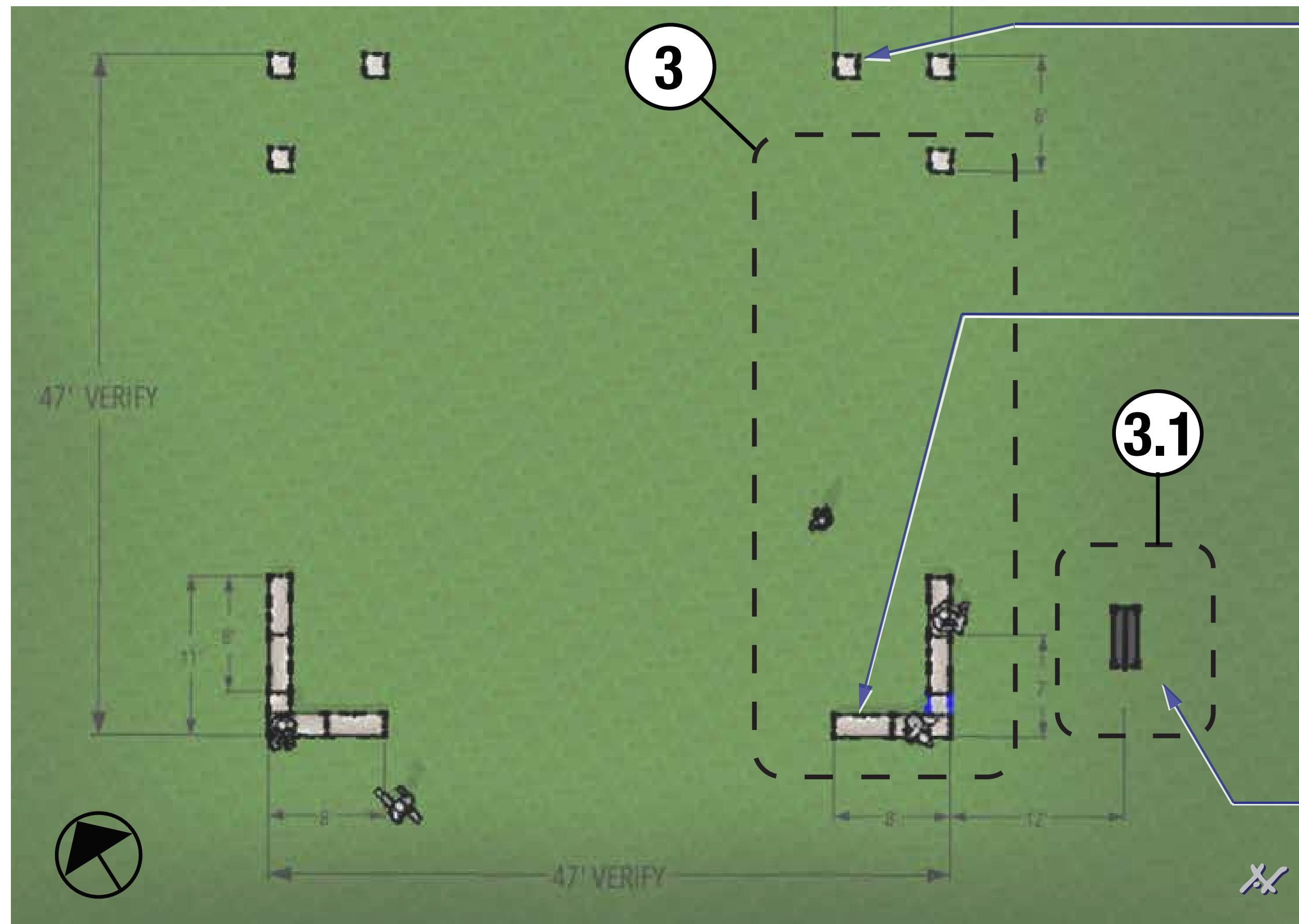
DESIGN DRAWINGS - SEPT 2014

**PERSPECTIVE  
VIEW FROM  
SOUTHEAST**

NOT TO SCALE

avstudio





RECLAIMED GRANITE PAVERS  
Marking Corners at Perimeter Of  
Former Robbins Mansion Foundation,  
Typical

RECLAIMED GRANITE BLOCK  
SITTING WALLS  
Marking Corners at Perimeter Of  
Former Robbins Mansion Foundation,  
With Bronze Plaque Marker,  
Typical

BRONZE DOG STATUE  
Commisioned Sculpture Restoring  
Removed Historical Dog Statue



Robbins History Project  
Robbins Farm Park



2

DESIGN DRAWINGS - SEPT 2014

## PLAN VIEW

NOT TO SCALE

avstudio



RECLAIMED GRANITE PAVERS  
Marking Corners at Perimeter Of  
Former Robbins Mansion Foundation  
18" x 18" x 5" Thick,  
Able To Be Driven Over By  
Heavy Vehicles & Maintenance Equipment,  
Typical

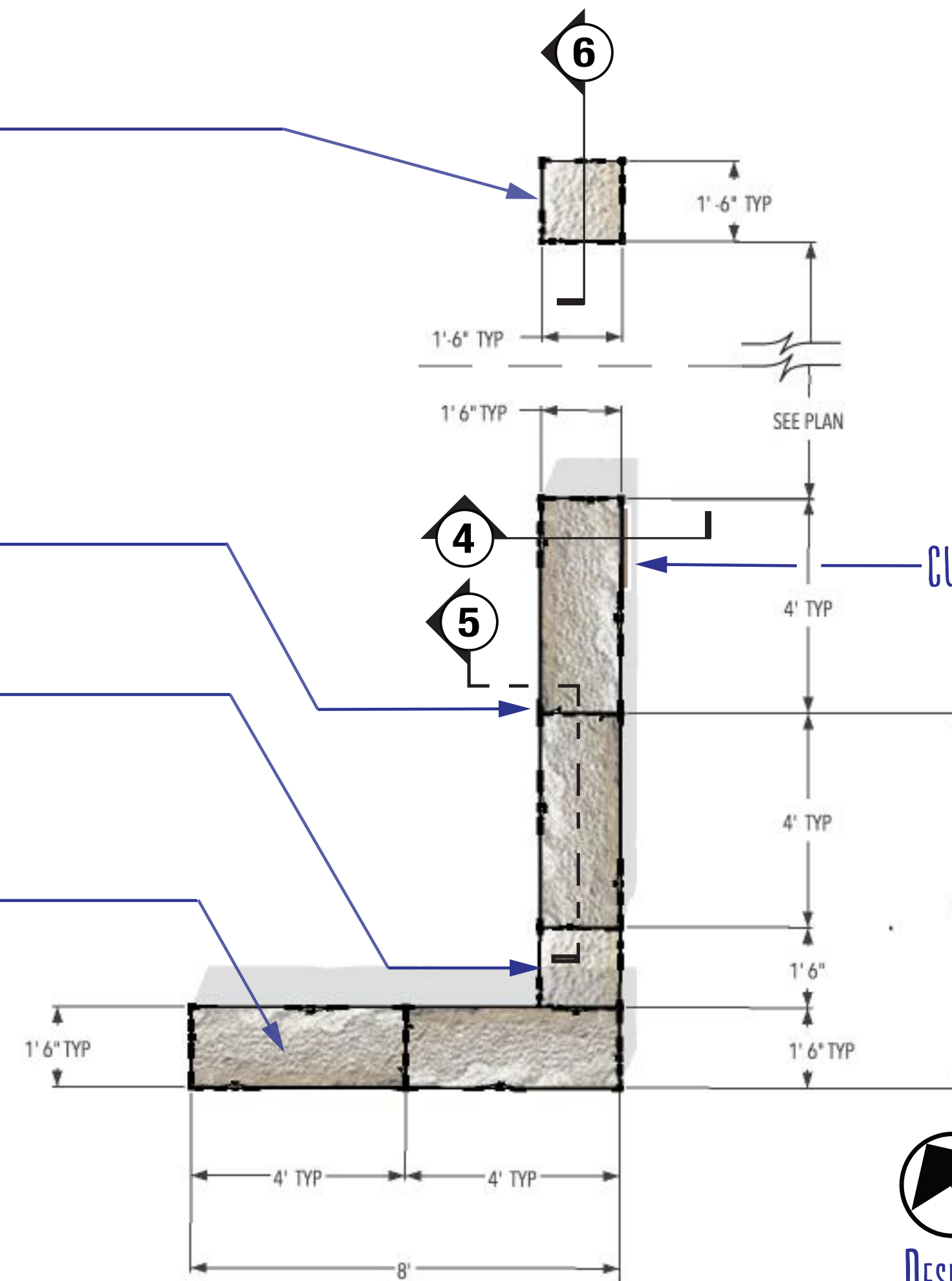
STRAIGHT CUT BUTT JOINTS  
Between Blocks, Typical

CUT GRANITE PAVERS  
Between Pairs of Granite Blocks,  
18" x 18" x 5" Thick

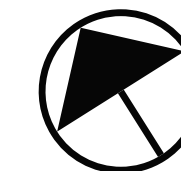
RECLAIMED GRANITE BLOCKS  
48" x 18" x 18" Typical



Robbins History Project  
Robbins Farm Park



CUSTOM BRONZE PLAQUE MARKER  
On Side of Block  
(Boston Side Only)  
Concealed &  
Vandalproof Mounting  
18" x 13 1/2"  
See Drawing 9



DESIGN DRAWINGS - SEPT 2014

3

## DETAIL KEY PLAN

NOT TO SCALE

avstudio





BRONZE DOG STATUE  
WITH BRONZE BASE  
(By Betz Art Foundry, Houston, TX)  
Vandalproof Mounting on  
on Concrete Base Structure as Required

1' 6 1/2" STATUE BASE (VERIFY)

EQ EQ

3' 8" STATUE BASE (VERIFY)

EQ

EQ

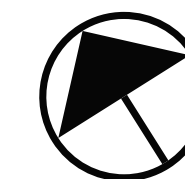
CONCRETE BASE STRUCTURE  
Below Statue Base  
With Chamfered Top Edge  
Exposed Above Ground Portion  
Stained with Black Concrete Sealer

7



Robbins History Project

Robbins Farm Park



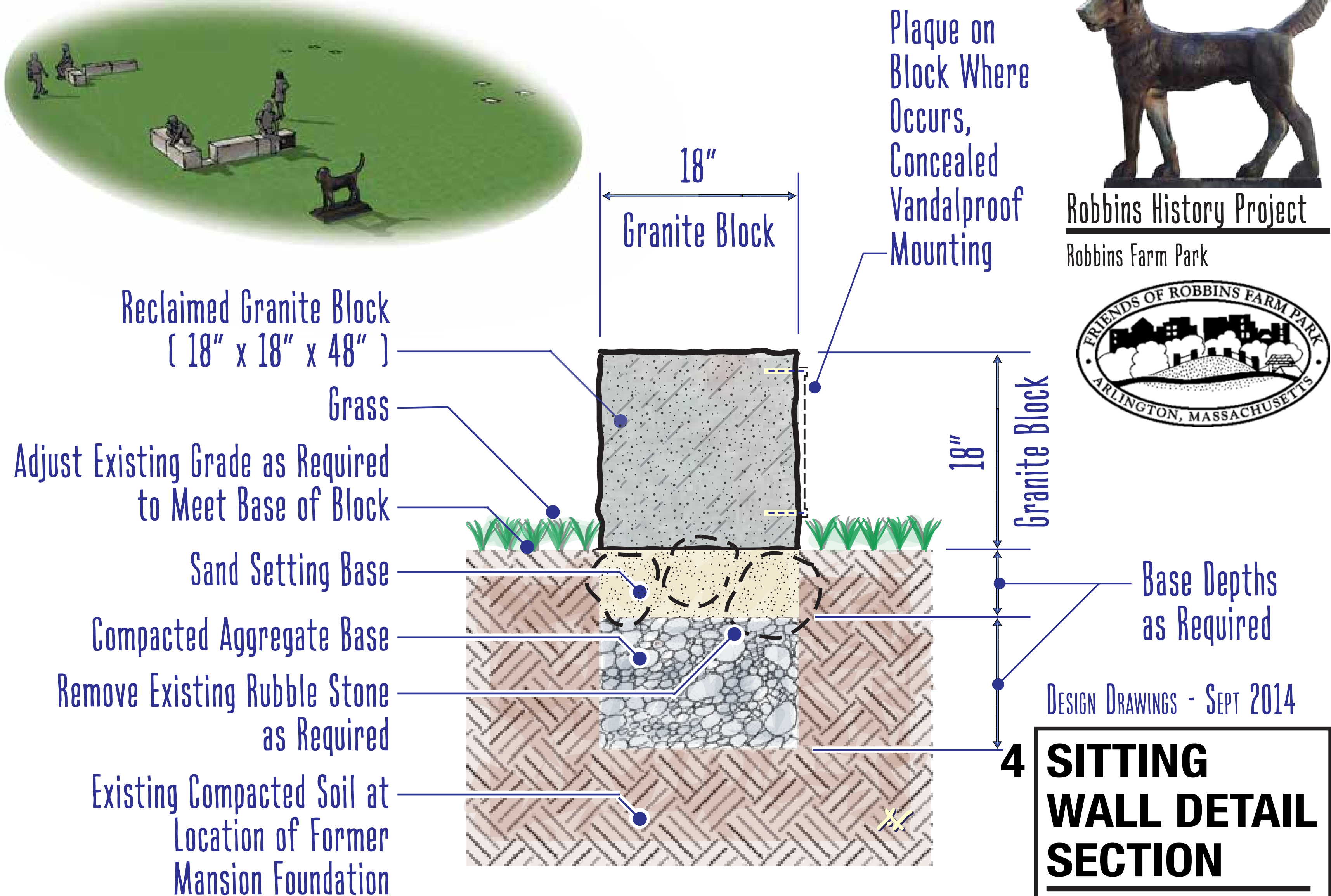
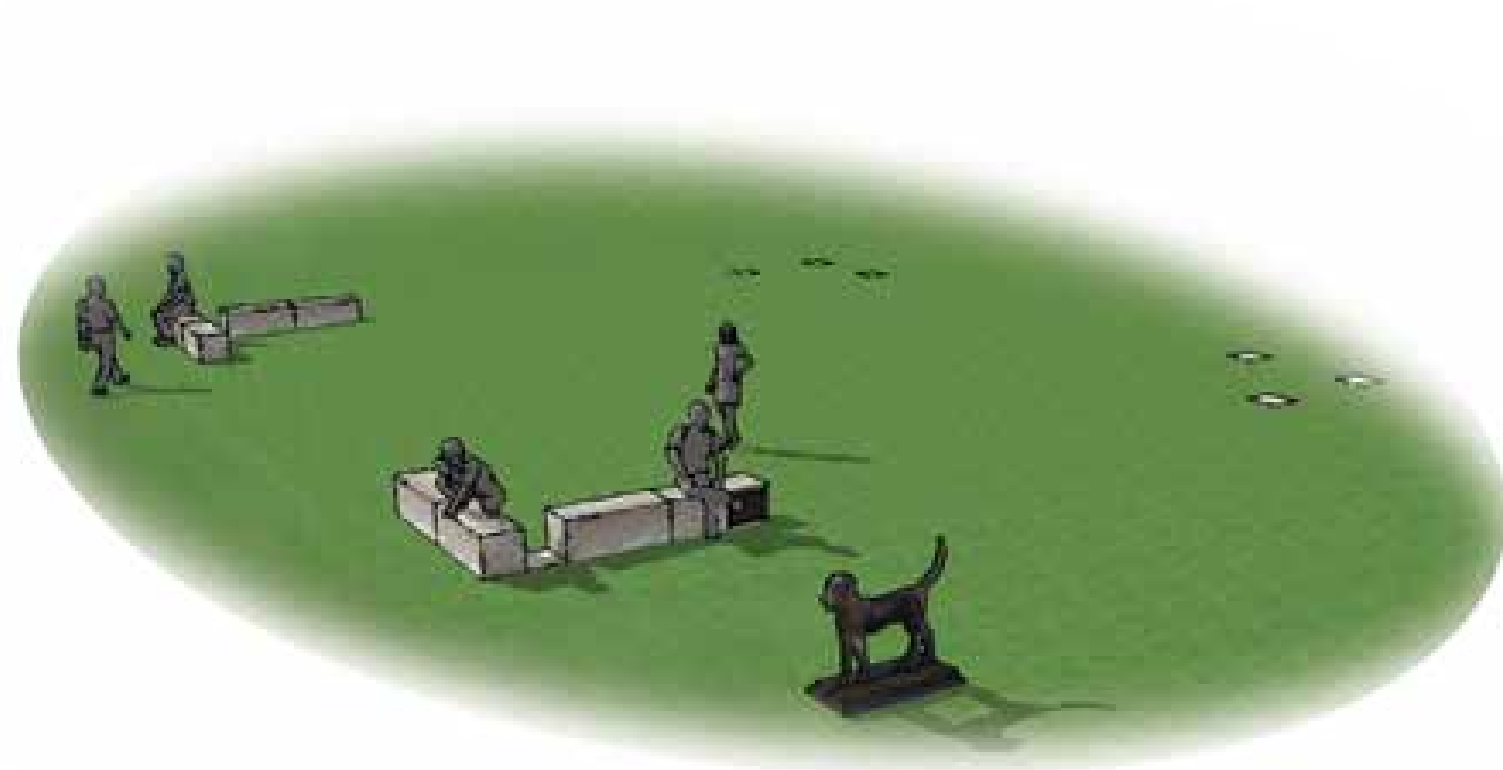
DESIGN DRAWINGS - SEPT 2014

### 3.1 DETAIL STATUE AREA PLAN

NOT TO SCALE

avstudio

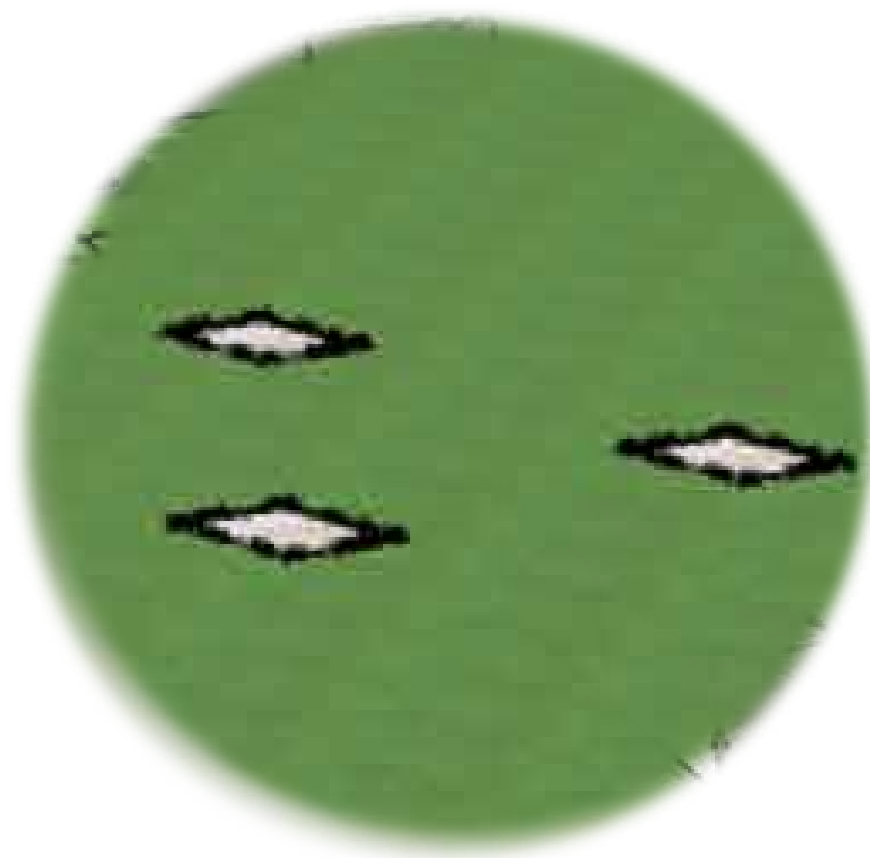




Robbins History Project  
Robbins Farm Park

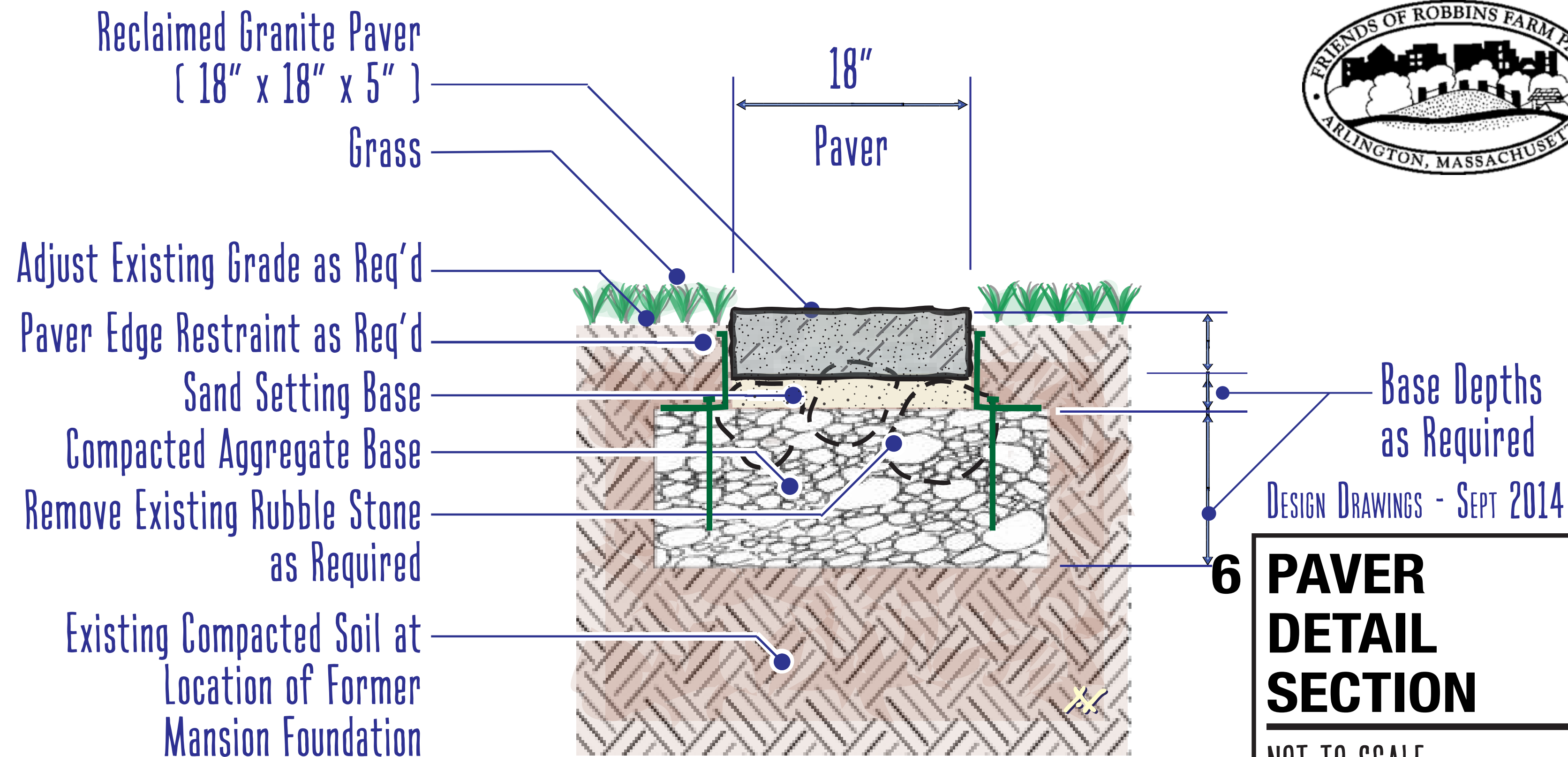






Robbins History Project

Robbins Farm Park





BRONZE DOG STATUE WITH BRONZE BASE  
(By Betz Art Foundry, Houston, TX)  
Concealed Vandalproof Mounting on  
on Concrete Base Structure as Required

1" CHAMFERED EDGE  
At Top of All 4 Sides of Concrete Base

GRASS

Approx 4"

2" Max  
All 4  
Sides



Robbins History Project

Robbins Farm Park



BLACK CONCRETE STAIN SEALER  
On Top 6" Min Portions  
of Concrete Structure

CONCRETE STATUE SUPPORT BASE  
Structure as Required

DESIGN DRAWINGS - SEPT 2014

## 7 STATUE AREA DETAIL SECTION

NOT TO SCALE *avstudio*

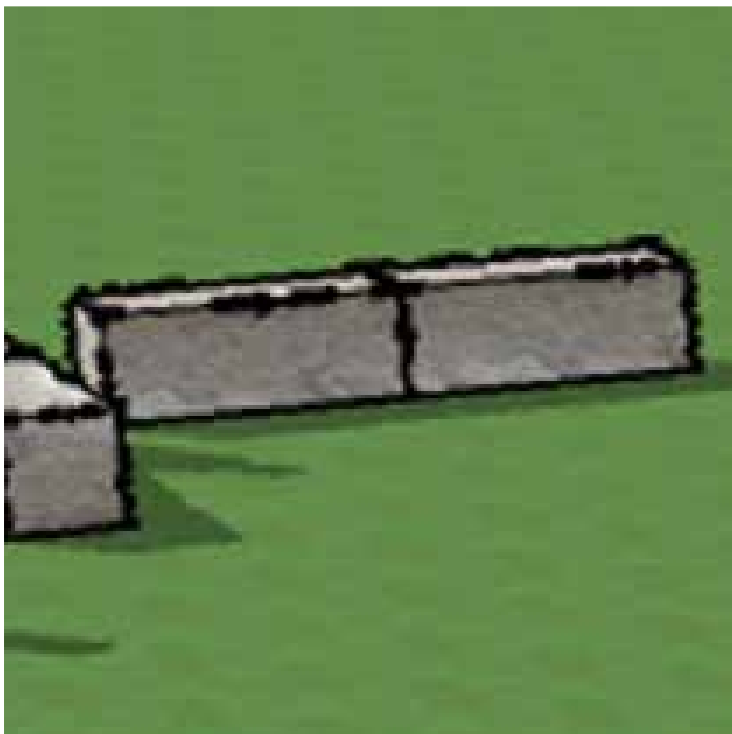
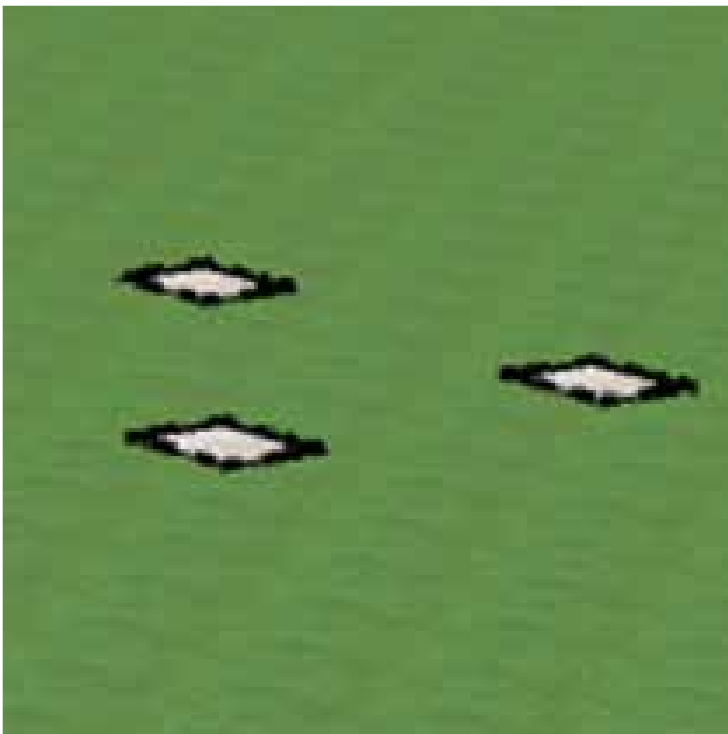
APPROXIMATE EXISTING GRADE  
Modify Existing Grade as Required  
For Level Area On All Sides of Statue

COORDINATE STATUE MOUNTING DETAIL  
Connection to Concrete Structure Below (e.g. Stainless Steel  
Threaded Rods Set in Epoxy in On-Site Drilled Holes As Shown)  
Coordinate Clearance with Concrete Reinforcement As Required





Reclaimed Granite Pavers



Reclaimed Granite Blocks



Bronze Plaque with Bas Relief



Robbins History Project

Robbins Farm Park



DESIGN DRAWINGS - SEPT 2014

8 MATERIALS

NOT TO SCALE

avstudio



BAS RELIEF ILLUSTRATION  
(From Vector Artwork)

CUSTOM BRASS PLAQUE  
Dark Field with "Leather" Texture  
Polished Bright Raised Art & Text  
Concealed & Vandalproof Mounting  
18" X 13 1/2"

RAISED BORDER EDGE FRAME  
3/4" Wide & Min 3/4" Deep

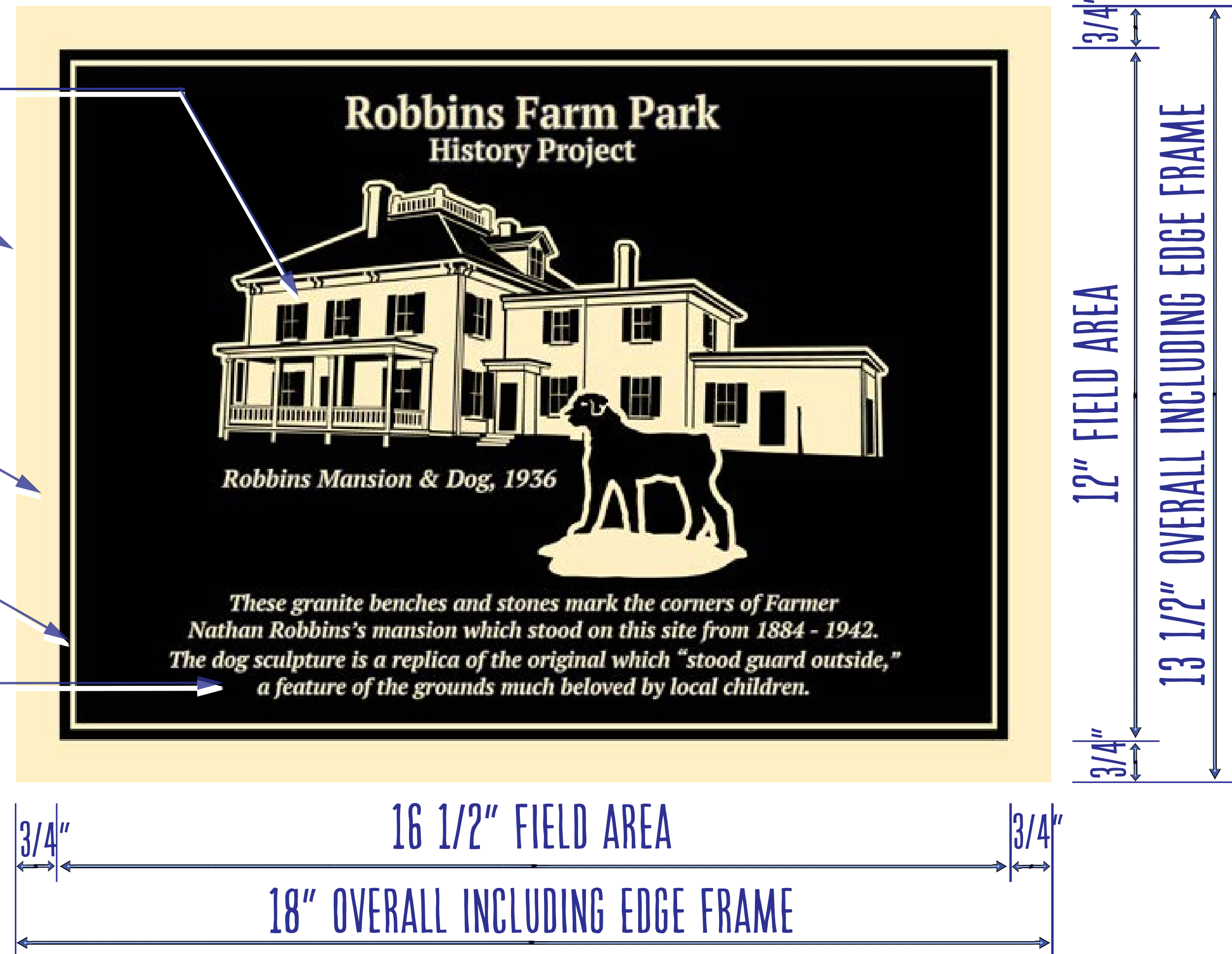
RAISED HAIRLINE BORDER  
(Can be provided as part of Vector Graphic)

RAISED LETTERING, TYP  
(Can be provided as part of Vector Graphic)

NOTE: Plaque Manufacturer to Advise on  
Most Economical Design Options



Robbins History Project  
Robbins Farm Park



DESIGN DRAWINGS - SEPT 2014

## 9 PLAQUE MARKER

NOT TO SCALE

avstudio



# Robbins Farm History Project

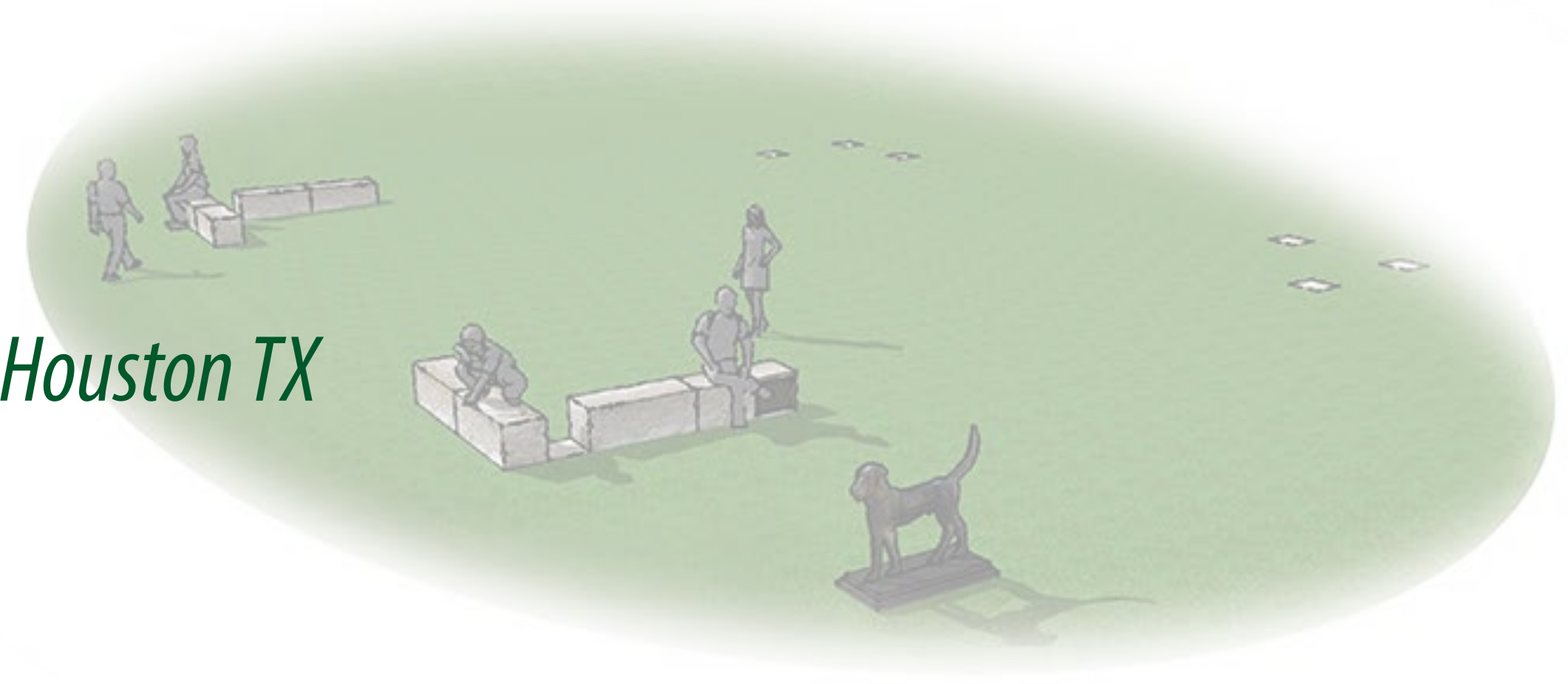
Building the Project





# Contractors

- Source for Dog Statue Mold: *Houston Historical Society, Houston TX*
- Sculptor: *Lori Betz, Betz Art Foundry, Houston TX*
- Statue Installation: *Robert Shure, Skyline Studios, Woburn MA*
- Site Preparation and Bench Installation: *Olde New England Granite, Wakefield, MA*
- Sign: *Vendor to be determined*





# Budget

- Statue: *(removal and replacement of Pillot Dog; creation of mold; casting of statue; shipping and insurance: \$9,500*
- Statue Installation: \$2,800
- Site Preparation and Bench Installation: \$14,700
- Signage: \$1,000
- Total Budget: \$29,000



# Timing

- Project to be completed by Spring 2015



